

Technical Rider « Symbiosis »

Performance

A contemporary circus diptych by Luuk Brantjes and Kolja Huneck
Duration: ±55-60 minutes

Performance	1
Introduction	3
Contact details	3
The convoy and lodging	3
The convoy	3
Lodging	3
Installation of the dome	4
Scouting of the pitch	4
Acces	4
Terrain	4
Anchor points	4
Marking of existing utilities	4
Check Local Authorities	4
Example planning	5
Technical/staff required	5
Build up / Strike / Audience reception	5
Build up	5
Strike	5
Surveillance	6
Electrical distribution	6
Light	6
Sound	6
Toilets and sanitary facilities	6
Waste	6
Extra	6
Additional activities	6
Publicity	6
Costs for connections to utilities	7
Wheelchair users	7
Weather conditions	7
Liability	7
Appendix	8
Drawings public access and security	8
Interior view	9

Introduction

This technical rider is an integral part of the contract concluded between the artists Luuk Brantjes and Kolja Huneck, hereinafter referred to as "the company", and the organizer of the show. In order to ensure a pleasant and efficient collaboration, it is advisable to immediately contact the responsible managers (production or technical director) in case of doubt.

Technical decisions regarding the Symbiosis show, with regard to set-up, public availability, security, public entry, etc. must be taken beforehand, in consultation between the two parties.

This technical rider

- Is meant for an outdoor performance location,
- Is an integral part of the performance contract,
- is contractually only valid in the English version of this document.

Contact details

tech. director:	Jef Delva	jef.delva@gmail.com	+32 472346390
Artists:	Luuk Brantjes	info@symbiosis-circus.com	+31 642939137
	Kolja Huneck	info@symbiosis-circus.com	+49 1729422203
Production:	Leoni Grützmacher	leoni.gruetzmacher@ehrlichearbeit.de	+49 3039202140
Website:		www.symbiosis-circus.com	

The convoy and lodging

The convoy

The convoy consists of:

- Van + Trailer (5,5t in combination)
- Van + Trailer (5,5t in combination)

The convoy must be positioned near the dome for loading and unloading. This must be parked in a secure and / or guarded place during performances or near the dome.

The cost of the convoy is the responsibility of the organizer. An estimate will be established according to the distances traveled and the tour dates.

Lodging

The organizer will have to provide lodging for the whole crew and surveillance for the dome and adjacent installations. If the organiser has access to caravans/mobile homes, we could use these as well for accommodation. The company will be on tour with:

- 2 artists
- 1 technician
- 1 production leader (optional)

Installation of the dome

Scouting of the pitch

For the validation of the area for the dome, please contact the technical director of the company in order to assess whether a location visit should be carried out on site or not.

The scouting, if it takes place, is paid by the organizer.

Acces

The organizer provides the company with hard terrain, accessible for heavy vehicles (7,5t)

Terrain

The terrain must be completely free at the date of the arrival of the company and be accessible in bad weather.

Area required for dome 14m x 14m

The maximum slope should not exceed 2%.

For grass fields, the grass should be mowed and removed.

For paved grounds, the organizer is responsible for the removal of the cobbles and their replacement where necessary.

If the installation area has trees, please contact the technical director of the show.

Anchor points

50 small metal stakes (diameter: 25mm / L :0,90m), 2 stakes per anchor point, will be put into the ground. If the dome is built up in an indoor location or large industrial hall, the metal stakes will not be necessary.

Marking of existing utilities

Before the arrival of the company, the organizer must indicate by marking the location of the gas / electricity / water / sanitation / fiber optic networks, etc ...

In the case of the presence of overhead cables, the organizer should contact the technical director of the show.

In the absence of marking or incorrect marking, the company cannot be held responsible for damage!

Check Local Authorities

In the scenario a check of local authorities is necessary, this will be discussed beforehand with our technical director, and planned on **J** before 15h00, so small adjustments are still possible to make before the performance.

Example planning

The actual planning depends on the tour schedule and the hours of the performance. Please contact the technical director, responsible for a specific planning.

DAY		TASKS	ORGANISERS TEAM	ARRIVAL FACILITIES
J-2	14h00-18h00	Arrival team + viewing location	-	-
J-1	09h00-18h00	build up dome + tribune	1 technician	Electricity 32A toilet facilities
J	09h00-13h00	build up tech (+ check of local authorities)	-	
J	14h00-18h00	rehearsals	-	
J	20h00	performance	2 audience attendants	
J+1	09h00-13h00	strike technical material	1 technician	
J+1	14h00-18h00	strike dome + tribune	1 technician	
J+2	09h00	departure	-	

Technical/staff required

Build up / Strike / Audience reception

The organizer provides the company with competent technicians on the assembly and disassembly phases. They must be present according to the schedule indicated above.

In addition, the organizer must set up the audience reception staff defined according to the table above.

The organizer provides its technicians with the necessary PPE (safety shoes, gloves, ear protectors and construction helmets)

Build up

The organizer provides

- 1 light- sound technician
- Sufficient mineral water (2L per person per day minimum)
- Hot meals during lunch break for the 3 persons of the company

Strike

The organizer provides

- 1 technician
- Sufficient mineral water (2L per person per day minimum)
- Hot meals during lunch break for the 3 persons of the company

Surveillance

The organizer provides

- Guarding / surveillance of the space and the dome during meal breaks if these are not taken at the performance venue.
- Guarding / night surveillance of the area and the tent from the arrival to the departure of the Collective.

Electrical distribution

There should be electricity available 24 hours a day from the moment of arrival until departure. The dome requires 1x 32A 400V delivered to the location of the dome. We bring our own transformer/fuse box.

Light

The company provides all the light equipment.

Sound

The company provides all the sound equipment.

Toilets and sanitary facilities

The organiser is responsible to supply a suitable solution for the sanitary facilities for both the artists and the audience.

Waste

When the company arrives, waste containers for sorting (eg. general waste, recyclable, paper, glass,...) must be present on the pitch. These containers must remain at the disposal of the company until their departure.

Extra

Additional activities

If additional activities are organized during or around the show, they must in no way compromise the artistic performances of the company. In addition, for each ancillary activity, the prior authorization of the artistic direction of the company must be obtained..

If the organizer produces noise outside the dome due to ancillary activities taking place during the performance, the artistic director reserves the right to prematurely end the performance.

Symbiosis is a show performed primarily in the evening; performance times should be determined by mutual agreement.

Publicity

Under no circumstances may the organizer place sponsorship advertisements on the outside or inside the dome. The reasons for this refusal are aesthetic.

Costs for connections to utilities

All costs relating to connections to utilities are the responsibility of the organizer.

Wheelchair users

Each performance is accessible to wheelchair users. The organizer must communicate in good time the number of places reserved for people with reduced mobility. Please note that a person in a wheelchair takes up 2 spaces of the total seating capacity.

Weather conditions

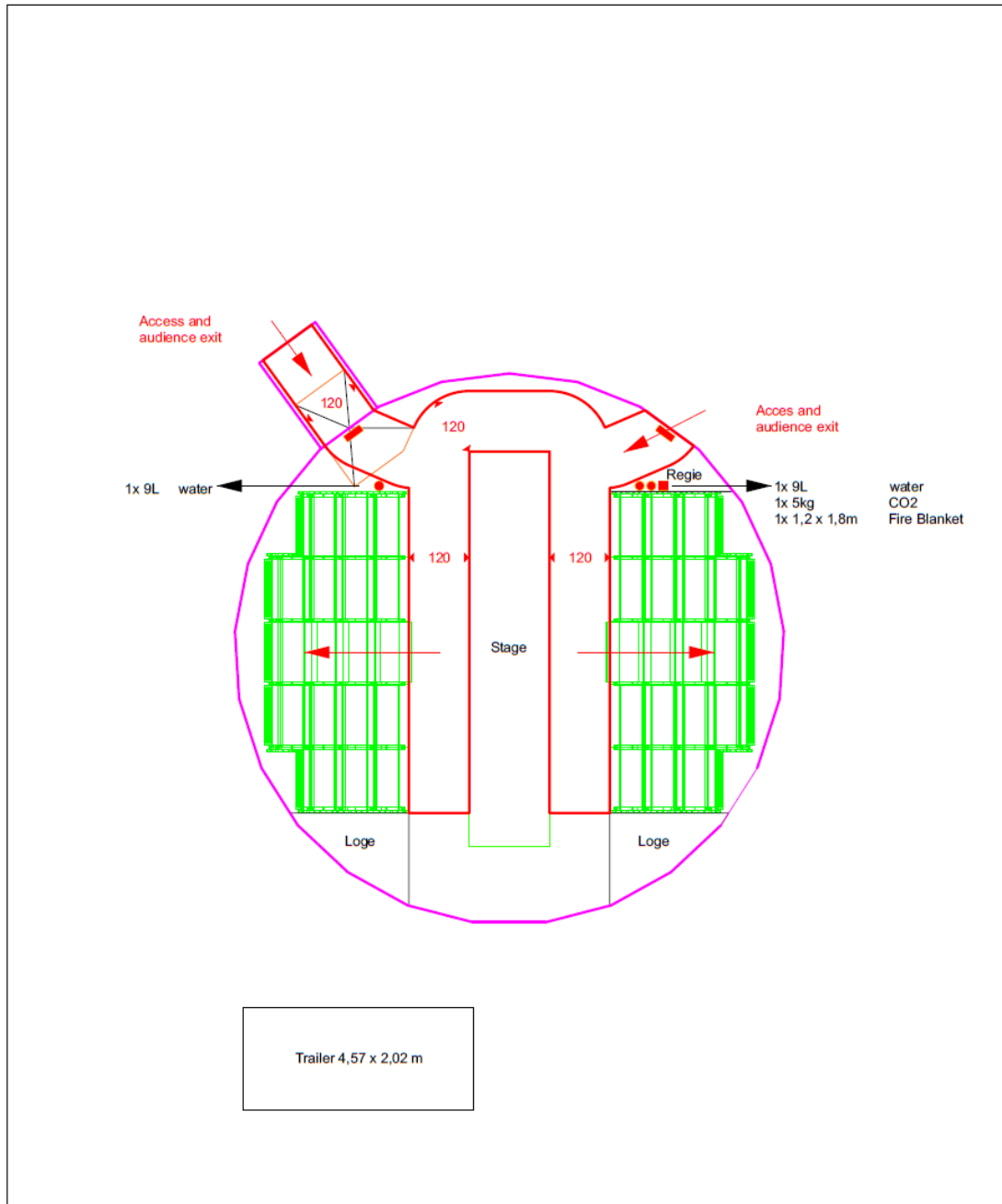
In the event of inclement weather causing water to flow on the site, the organizer must foresee evacuation routes so as to allow free movement of artists and the public. Any accident or human or material damage occurring in the event that the organizer does not comply with its obligations will be at his charge.

The show will not be able to take place when wind speeds are over 80 KM/H




Liability

In the event of non-compliance by the organizer with one of the conditions set out above, the company declines all responsibility in the event of damage or material or bodily injury.

Drawings public access and security

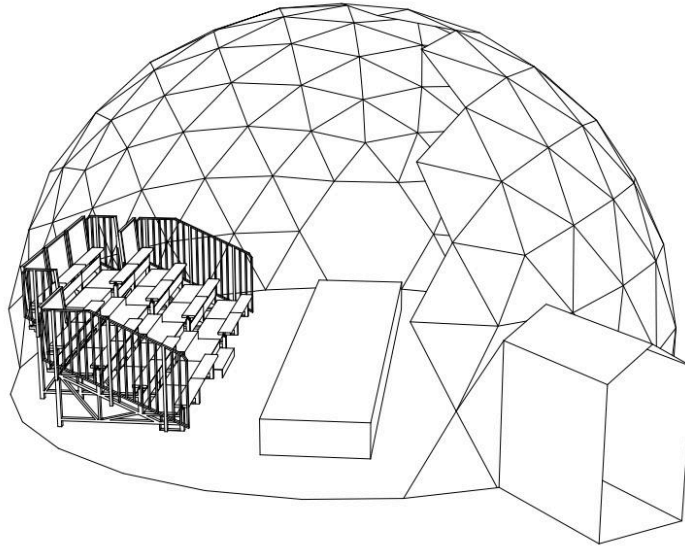


Evacuation plan

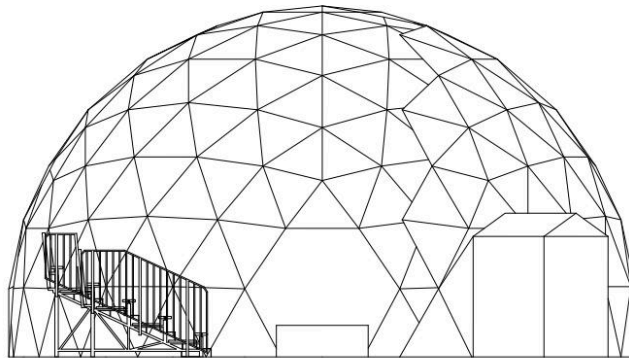
Symbiosis	Scale 1:100	Legend Emergency light  Fire extinguisher  Fire blanket 
-----------	-------------	--

Interior view

Perspective



Front view
scale 1:100



Overview half in-out dome

Symbiosis

Convoy plan

Motorised vehicles

VW Transporter van
5,91 x 1,99 m

Mercedes Sprinter van
5,93 x 2,00 m

Non-motorised vehicles

Trailer 1
4,57 x 2,02 m

Trailer 2
4,36 x 2,03 m

Convoy

Symbiosis
Vehicles should be parked at a secure place